

Container dwell times at San Pedro Bay ports reach year-high levels

October 22, 2024

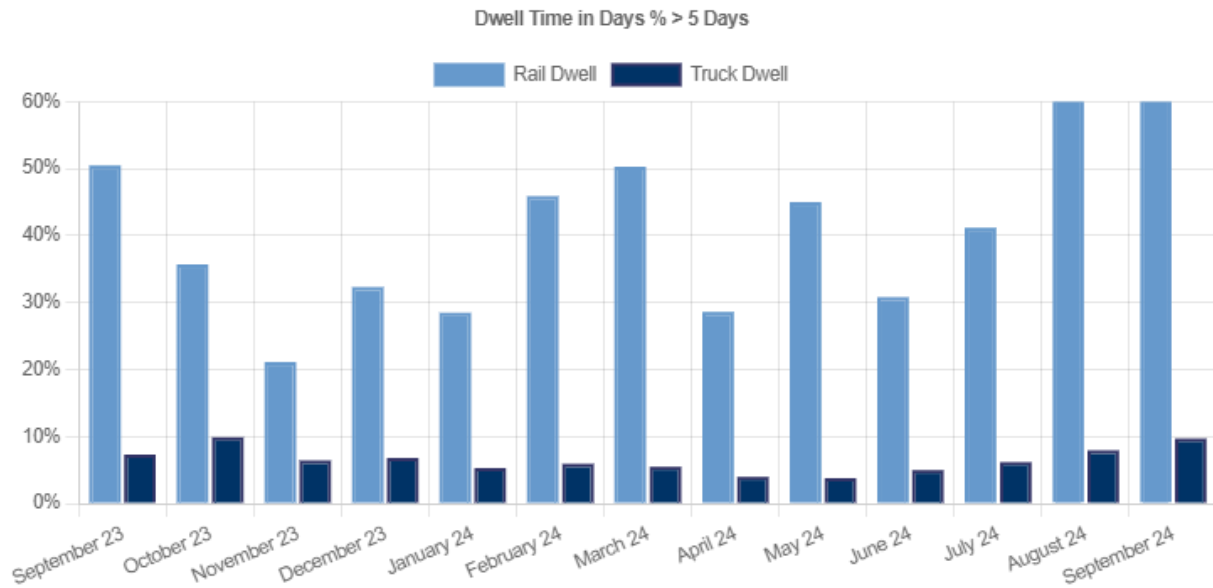


San Pedro Bay ports recorded the highest levels of the year in both truck and rail-destined container dwell times.

Pacific Merchant Shipping Association (PMSA), an independent association representing owners and operators of marine terminals, ocean carriers, and vessels operating on the US West Coast, noted that as cargo volumes at the San Pedro Bay ports continued their surge last month, September saw continued growth in demand for container equipment and space at marine terminals at the Ports of Los Angeles and Long Beach.

The record-high dwell time levels reflect the ongoing pressures on the logistics system as it copes with sustained demand, according to PMSA.

Cargo moving through the two major US ports via truck spent an average of 3.21 days at terminals in September, on par with the October 2023 peak season high. Additionally, rail-destined cargo dwell time rose to 9.25 days, surpassing the September 2023 peak season high of 6.54 days and reflecting the high demand for growth in intermodal cargo by nearly doubling the rail dwell from June of this year.



“In September, the evolving dwell times underscore both the complexity and adaptability of our supply chain as we manage increased cargo volumes,” pointed out Natasha Villa, External Affairs Manager of the Pacific Merchant Shipping Association (PMSA).

Villa went on to explain, “The divergence in truck dwell times and rail dwell times highlights the trend in diversifying discretionary cargo across the entire logistics network, a consistent flow of local cargo, and a surge in inland-destined intermodal cargo through the nation’s premier import gateway. Our marine terminals continue to work diligently to balance capacity and maintain fluidity, providing supply chain system resilience, and ensuring that the nation’s goods keep moving.”